



***A Revolutionary Approach to Hair Care Before the Hair Do***

*Dedicated to the Consummate Designer and their Clients who seek  
a Systematic approach to Conditioning Excellence*

**Call or Click Today!**

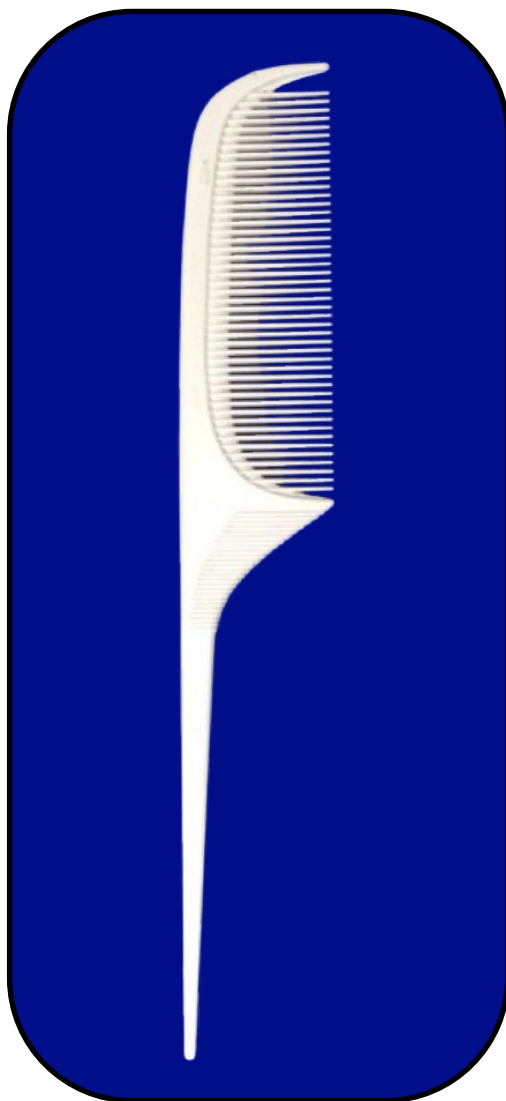
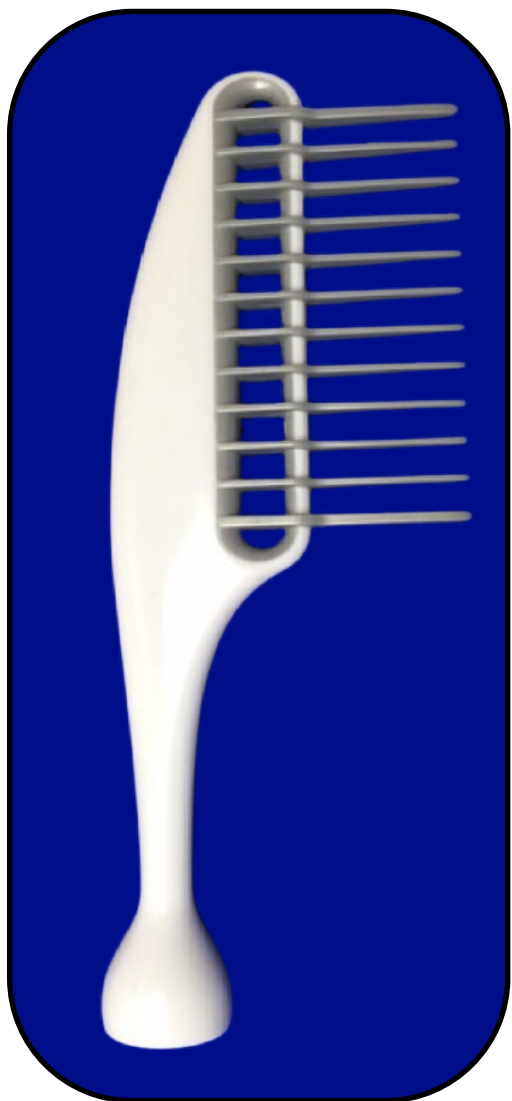
**888-351-SILK OR [www.forever-silk.com](http://www.forever-silk.com)**



2

## **WHAT YOU'LL NEED:**

1. A Large Toothed Detangling Comb;
2. A Finer Toothed Comb For Maximum Penetration and Deep Conditioning;
3. A Rake or Lifter;



***\*Deep Conditioning with your comb, NO DRYER NEEDED!!!***

Call or Click Today!

888-351-SILK OR [www.forever-silk.com](http://www.forever-silk.com)

# INTRODUCTION OF FOREVER SILK HAIR & SKIN SYSTEMS



**Forever Silk Step 1  
Cuticle Cleansing  
Shampoo** thoroughly  
cleanses the hair shaft.



**Forever Silk Step 2 Penetrating  
Leave-In Conditioner** replaces  
sebaceous  
oils lost to chemical services and  
Longitudinal  
Grooving. Deep conditions  
cortical fibers on contact.  
Leaves hair soft and silky.



**Forever Silk Step 3  
Leave-In Moisture  
Treatment** controls porosity by  
closing cuticle  
layer of the hair shaft.  
Detangles, retards weathering,  
leaves hair shiny  
and healthy for styling.



**Forever Silk Step 4  
Crème Moisture Stimulant**  
provides protection  
as it infuses moisture and  
sheen during thermal services.  
For daily use.  
Light, non-greasy formula

**Call or Click Today!**

**888-351-SILK OR [www.forever-silk.com](http://www.forever-silk.com)**

# NATURAL HAIR & SCALP CONDITIONING TECHNIQUES FOR TWISTS; LOCKS; BRAIDS; FROS

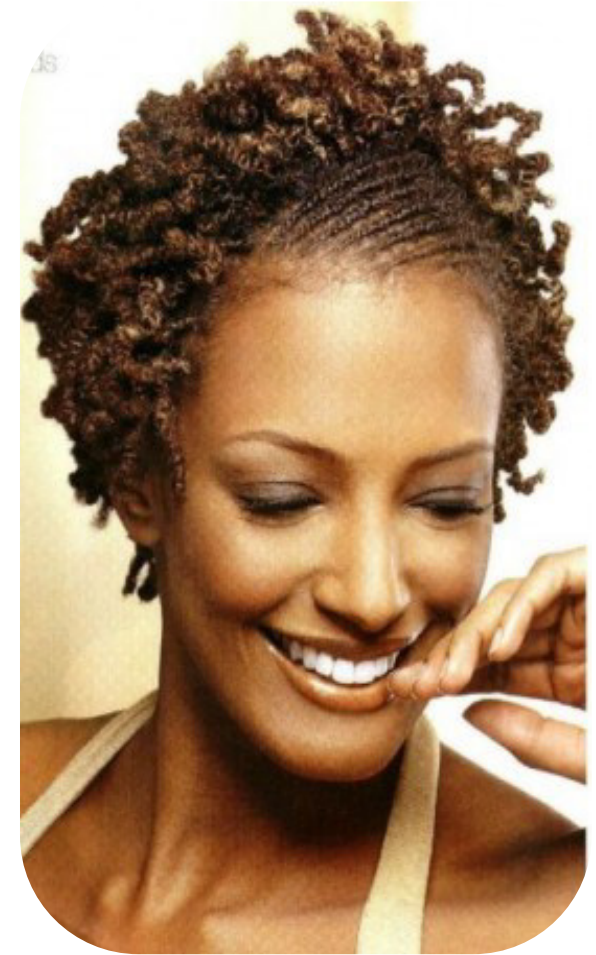
1. Shampoo hair using  
Forever Silk Step1  
Cuticle Cleansing  
Shampoo.



3. Apply Forever Silk Softening  
Lotion or Forever Silk's Silk &  
Honey Mist to moisturize hair  
after styling..



2. Apply Forever Silk  
Part C Root Fertilizer &  
Growth Rub to scalp.  
This will help to accelerate  
growth and retard  
dry, flaky, itchy scalp..



4. Use your favorite styling technique to  
create Twists, Locks, Braids or Fro style of  
your choice. Dry the style completely.

Call or Click Today!

888-351-SILK OR [www.forever-silk.com](http://www.forever-silk.com)



# 5 CONDITIONING TWISTS, LOCKS, BRAIDS OR FROS WITH COLOR

1. PROTECT SCALP: Warm Forever Silk Part C Root Fertilizer & Growth Rub until it melts. Apply to scalp with Q-Tip or Cotton Ball as you part hair. Allow scalp to rest for 10 to 20 minutes .



2. Now use color of your choice according to manufacturer's instructions. Upon completion of coloring technique....



5. Apply **Forever Silk Step 3 Leave-In Moisture Treatment** liberally. This helps to seal the color and moisture created by Step 2 Leave-In Conditioner in the hair. Stroke the hair in a downwards direction from root to ends with fingertips, to help seal the hair shaft.



6. After Step 3, and while hair is still damp, apply the gel or styling product to create the style of your choice.

3. Shampoo hair with **Forever Silk Conditioning and Neutralizing Shampoo** twice., 2X



4. Apply **Forever Silk Step 2 Penetrating LeaveIn Conditioner** to each twist, lock or braid. Make sure Step 2 saturates each twist, lock or braid. This helps to prevent the color from drying the hair.



7. Apply **Forever Silk s Silk & Honey Mist** for Fine to Medium hair textures or **Forever Silk Softening Lotion** for Medium to Coarse hair textures as needed to prevent dryness and /or breakage.



This procedure helps eliminate scalp dryness and breakage of your color treated Twists, Locks, or Braids

Call or Click Today!

888-351-SILK OR [www.forever-silk.com](http://www.forever-silk.com)

# NATURAL HAIR STYLING TECHNIQUES—FLAT IRON STYLING

How to use the Forever Silk Conditioning System to get light, shiny, bouncy, flowing hair WITHOUT CHEMICALS!



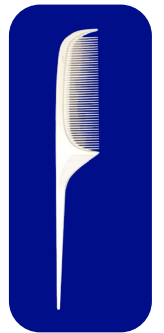
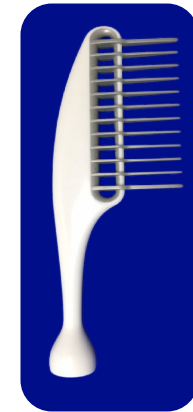
## 1. Shampoo hair with Step 1 Cuticle Cleansing Shampoo

**\* Rinse thoroughly**



## 2. Apply the Step 2 Penetrating Leave-In Conditioner .

- Section hair.
- Saturate hair thoroughly from root to the ends.
- Use fingers with Step 2, to remove tangles!!!
- Comb and rub the Step 2 into the hair from root to end. First use a detangling comb, then a fine toothed comb. This insures total penetration of the conditioner into the cortex of each hair shaft.
- LEAVE IN.
- Hair is now ready for Step 3 Leave-In Moisture Treatment.



## 3. Apply the Step 3 Leave-In Moisture Treatment to each section as you did with Step 2.

- Saturate the hair thoroughly from the roots to ends.
- Comb and rub the hair first with a detangling comb, if needed, then with as fine a toothed comb as permissible.
- This insures total penetration of the Moisture Treatment into the hair shaft, closes the cuticle and seals in the moisture created by STEP 2.
- REMEMBER, STEP 3 IS ALWAYS LEFT IN, NEVER RINSED OUT.



## 7 NATURAL HAIR STYLING TECHNIQUES—FLAT IRON STYLING cont.



4. Apply a small amount of **Step 4 Crème Moisture Stimulant** to each section as needed. Comb through for even distribution. **If your natural curl pattern is desired as your style, simply allow hair to air dry.** You may Blow dry or use a hooded to natural curl pattern dryer to reduce drying time.



5. For Light, Smooth, Silky, Healthy Hair, with Sheen use Flat Iron to get the desired results. Simply comb Step 4 through hair to protect from the heat before using the Flat Iron. Do not over apply. Any vapor is excess moisture.

**Forever Silk Step 4 Crème Moisture Stimulant provides thermal protection from sFlat Iron.**

**YOU MAY USE STEP 4 AS NEEDED FOR DAILY MOISTURE & MAINTENANCE**

Call or Click Today!

888-351-SILK OR [www.forever-silk.com](http://www.forever-silk.com)



# 8 NATURAL HAIR STYLING TECHNIQUES—PRESS & CURL STYLING

How to use the Forever Silk Conditioning System to get light, shiny, bouncy, flowing hair WITHOUT CHEMICALS!



## 1a. Shampoo hair with Step 1 Cuticle Cleansing Shampoo

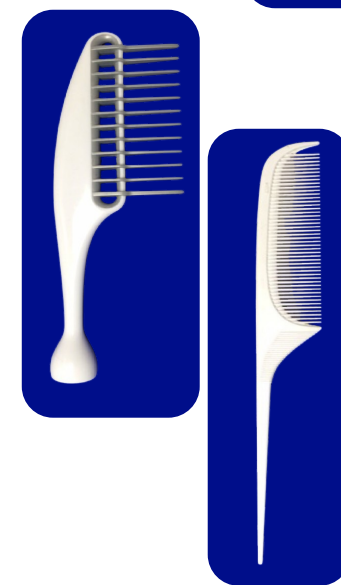
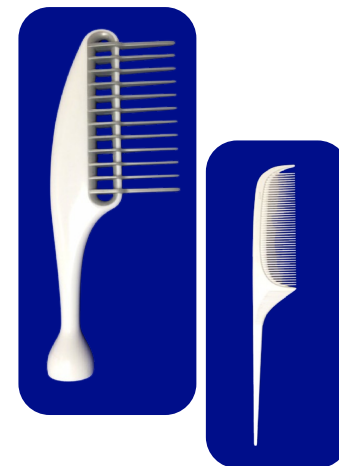
1b. Rinse thoroughly. Hair is now ready to accept the Step 2 Penetrating Leave In Conditioner.



2. Apply the Step 2 Penetrating Leave-In Conditioner. Section hair.
- Now saturate the hair thoroughly from root to the ends.
  - Use fingers with Step 2, to remove tangles!!!
  - Comb and rub the Step 2 into the hair.
  - First use a detangling comb, then with a fine toothed comb from root to ends.
- This will insure total penetration of the conditioner into the cortex of each hair shaft.
- LEAVE IN.
  - Hair is now ready for Step 3 Leave-In Moisture Treatment.



3. Apply the Step 3 Leave-In Moisture Treatment first to each section as you did with Step 2.
- Saturate the hair thoroughly from the roots to ends.
  - Comb and rub the hair first with a detangling comb, if needed, then with as fine a toothed comb as permissible from root to ends.
  - This insures total penetration of the Moisture Treatment into the hair shaft, closes the cuticle and seals in the moisture created by STEP 2.
  - REMEMBER, STEP 3 IS ALWAYS LEFT IN, NEVER RINSED OUT.





**4. Apply a small amount of Step 4 Crème Moisture Stimulant to each parted section as needed.**

Comb through for even distribution.  
If your natural curl pattern is desired as your style, simply allow hair to air dry.  
Blow dry or use a hooded dryer to reduce drying time.



**5. For Light, Smooth, Silky, Healthy, Bone Straight Hair, with Sheen, use a Pressing Comb with as much heat as practical for each hair type. Any vapor is excess moisture. Simply comb Step 4 through hair to protect from the heat before the Hot Comb.**

**Forever Silk Step 4 Crème Moisture Stimulant will protect hair from heat of Hot Comb**

**YOU MAY USE STEP 4 AS NEEDED FOR DAILY MAINTENANCE**

**Call or Click Today!**

**888-351-SILK OR [www.forever-silk.com](http://www.forever-silk.com)**



# BLOW DRY STYLING

How to use the Forever Silk Conditioning System to get light, shiny, bouncy, flowing hair **WITHOUT CHEMICALS!**



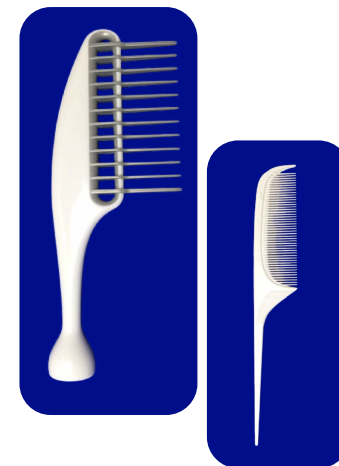
**1a.** Shampoo hair with Step 1 Cuticle Cleansing Shampoo

**1b.** Rinse thoroughly. Hair is now ready to accept the Step2 Penetrating Leave-In Conditioner.



2. Apply the Step 2 Penetrating Leave-In Conditioner .

- Section hair.
- Now saturate the hair thoroughly from root to the ends.
- Use fingers with Step 2, to remove tangles!!!
- Comb and rub the Step 2 into the hair. First use a detangling comb, then with a fine toothed comb from root to ends. This will insure total penetration of the conditioner into the cortex of each hair shaft.
- LEAVE IN
- Hair is now ready for Step 3 Leave-In Moisture Treatment.



3. Apply the Step 3 Leave-In Moisture Treatment first to the hair line area of the patron.

- Now saturate the hair thoroughly from the roots to ends.
- Comb and rub the hair first with a detangling comb, then with as fine a toothed comb as permissible from root to ends.
- This insures total penetration of the moisture treatment into the hair shaft and seals in the moisture created by STEP 2.
- REMEMBER, STEP 3 IS ALWAYS LEFT IN NEVER RINSED OUT



## BLOW DRY STYLING

4. Section hair and comb through a small amount of **Step 4 Crème Moisture Stimulant** to each section as needed.
- If natural curl pattern is desired, simply allow to air dry or use a hooded dryer to reduce drying time.



- If a slightly straighter style is desired, use a blow dryer with comb or brush to get desired straightness. Any vapor is excess moisture.
- For silky straighter and smoother styles, you may use a Flat Iron or Pressing Comb for some hair textures.

**Forever Silk Step 4 Crème Moisture Stimulant will protect hair from heat of Blow Dryer**

**YOU MAY USE STEP 4 AS NEEDED FOR DAILY MAINTENANCE**

**Call or Click Today!**

**888-351-SILK OR [www.forever-silk.com](http://www.forever-silk.com)**

# AFRO-CARIBBEAN STYLING TECHNIQUES



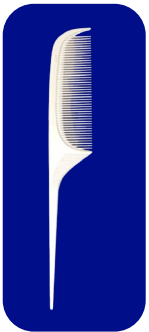
## 1a. Shampoo hair with Step 1 Cuticle Cleansing Shampoo

1b. Rinse thoroughly. Hair is now ready to accept the Step2 Penetrating Leave-In Conditioner.



## 2. Apply the Step 2 Penetrating Leave-In Conditioner. Section hair.

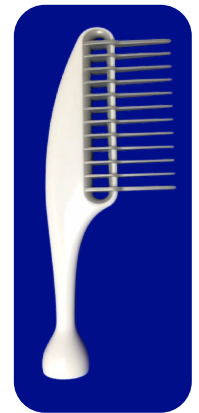
- Now saturate the hair thoroughly from root to the ends.
- **Use fingers with Step 2, to remove tangles!!!**
- Comb and rub the Step 2 into the hair. First use a detangling comb, then with a fine toothed comb from root to ends. This will insure total penetration of the conditioner into the cortex of each hair shaft.
- **LEAVE IN .**  
Hair is now ready for Step 3 Leave-In Moisture Treatment.



## 3. Apply the Step 3 Leave-In Moisture Treatment first to the hair line area of the patron.

- Now saturate the hair thoroughly from the roots to ends.
- Comb and rub the hair first with a detangling comb, then with as fine a toothed comb as permissible from root to ends. This insures total penetration of the moisture treatment into the hair shaft and seals in the moisture created by STEP 2.

**REMEMBER, STEP 3 IS ALWAYS LEFT IN NEVER RINSED OUT.**







## EXERCISE YOUR OPTIONS CHEMICAL FREE



**AFRO-CARRIBEAN CONDITIONING & STYLING TECHNIQUES** Afro-Caribbean hair varies from Tightly Coiled to Loose Curly. You may use the Forever Silk Conditioning System to condition and/or style these hair textures in various ways. If you choose, your hair may be conditioned, and worn in its natural state. Additionally, if you prefer, you may blow it dry or flat iron it to a silky straight look to achieve different style variations for different occasions **all chemical free. EXERCISE YOUR OPTIONS, CHEMICAL FREE!! Without Grease!!**



Fine to Medium



Medium to Coarse



Coarse to Kinky Coily

Call or Click Today!

888-351-SILK OR [www.forever-silk.com](http://www.forever-silk.com)

# RELAXED HAIR STYLING TECHNIQUES

**HOW TO USE THE FOREVER SILK HAIR CONDITIONING SYSTEM TO GET SHEEN, SILKINESS, BODY, & RADIANTLY HEALTHY HAIR DURING...The Forever Silk Crème Conditioning Relaxer Application. With Cold Crème and Shea butter. (FOR PROFESSIONAL USE ONLY!)**



**1. Relax hair with Forever Silk Crème Conditioning Relaxer to the desired straightness, using techniques for touch-up or virgin hair.**

- Rinse thoroughly, neutralize twice with Forever Silk Conditioning & Neutralizing Shampoo.
- Rinse all traces of relaxer from hair towel blot.
- Simply follow instructions on label.

**Fine Hair 8 to 10 min.; Medium 12 to 15 min.; Coarse/Resistant 15 to 18 min.;**



**2. Shampoo hair twice with Forever Silk Conditioning & Neutralizing Shampoo.**

- Rinse hair thoroughly. Hair is now ready to accept the Step 2 Penetrating Leave-In Conditioner.



**3. Apply the Step 2 Penetrating Leave-In Conditioner.**

- Section hair. Now saturate the hair thoroughly from root to the ends.
- Comb and rub the Step 2 into the hair.
- First use a detangling comb.....
- **Use fingers with Step 2, to remove tangles!!!**
- Then with a fine toothed comb. This will insure total penetration of the conditioner into the cortex of each hair shaft. **LEAVE IN.**
- Hair is now ready for Step 3 Leave-In Moisture Treatment.



# RELAXED HAIR STYLING TECHNIQUES

## BLOW DRY AND STRAIGHT STYLES



**4. Apply the Step 3 Leave-In Moisture Treatment** first to each section as you did with Step 2.

- Saturate the hair thoroughly from the roots to ends. Comb and rub the hair first with a detangling comb, if needed,
- then with as fine a toothed comb as permissible from root to ends.
- This insures total penetration of the Moisture Treatment into the hair shaft, closes the cuticle and seals in the moisture created by STEP 2.

**REMEMBER, STEP 3 IS ALWAYS LEFT IN, NEVER RINSED OUT.**

**5. Comb through an appropriate amount of Step 4 Crème Moisture Stimulant** for each hair type to protect the hair while styling.

- Hair is now ready for styling with Blow Dryer and/or Curling Irons. Any vapor is excess moisture.



Call or Click Today!

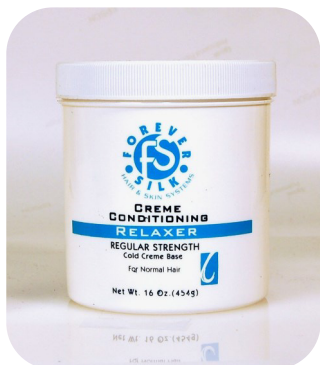
888-351-SILK OR [www.forever-silk.com](http://www.forever-silk.com)



## RELAXED HAIR STYLING TECHNIQUES

**HOW TO USE THE FOREVER SILK HAIR CONDITIONING SYSTEM TO GET SHEEN, SILKINESS, BODY, & RADIANTLY HEALTHY HAIR DURING...The Forever Silk Crème Conditioning Relaxer Application.**

**With Cold Crème and Shea butter. (FOR PROFESSIONAL USE ONLY!)**



1. Relax hair with Forever Silk Crème Conditioning Relaxer to the desired straightness, using techniques for touch-up or virgin hair.
  - Rinse thoroughly, neutralize twice with Forever Silk Conditioning & Neutralizing Shampoo.
  - Rinse all traces of relaxer from hair, towel blot.
  - Simply follow instructions on label.

**Fine Hair 8 to 10 min.; Medium 12 to 15 min.; Coarse/Resistant 15 to 18 min.;**



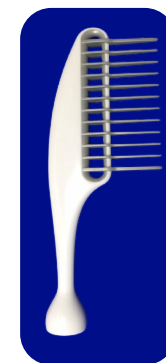
2. Shampoo hair twice with **Forever Silk Step 1 Conditioning & Neutralizing Shampoo.**

- Rinse hair thoroughly.
- Hair is now ready to accept the Step 2 Penetrating Leave-In Conditioner.



3. Apply the **Step 2 Penetrating Leave-In Conditioner.**

- Section hair. Now saturate the hair thoroughly from root to the ends.
- Comb and rub the Step 2 into the hair.
- First use a detangling comb.....
- **Use fingers with Step 2, to remove tangles!!!**
- Then with a fine toothed comb. This will insure total penetration of the conditioner into the cortex of each hair shaft.
- **LEAVE IN.**
- Hair is now ready for Step 3 Leave-In Moisture Treatment.



## RELAXED HAIR STYLING TECHNIQUES -WRAP STYLING



### 4. Apply the Step 3 Leave-In Moisture Treatment

- First to each section as you did with Step 2.
- Saturate the hair thoroughly from the roots to ends.
- Comb and rub the hair first with a detangling comb, if needed, then with as fine a toothed comb as permissible. (This insures total penetration of the Moisture Treatment into the hair shaft, closes the cuticle and seals in the moisture created by STEP 2.)
- **REMEMBER, STEP 3 IS ALWAYS LEFT IN, NEVER RINSED OUT**

### 5. Perform the WRAP STYLING technique of your choice.

- You may apply more Step 3 Leave-In Moisture Treatment IF needed to allow comb to *glide through the hair* as you perform your Wrapping or “Molding” technique.
- Additionally, after Step 3, you may use **Setting Lotion** on soft, fine hair textures, if needed.

### 6. Comb through a small amount of Step 4 Crème Moisture Stimulant to protect the hair and add sheen during drying.

You may allow hair to air dry or use a hooded dryer or blow dryer to speed the drying time.



Call or Click Today!

888-351-SILK OR [www.forever-silk.com](http://www.forever-silk.com)



# RELAXED HAIR STYLING TECHNIQUES

**HOW TO USE THE FOREVER SILK HAIR CONDITIONING SYSTEM TO GET SHEEN, SILKINESS, BODY, & RADIANTLY HEALTHY HAIR DURING...The Forever Silk Crème Conditioning Relaxer Application.**  
**With Cold Crème and Shea butter. (FOR PROFESSIONAL USE ONLY!)**



1. Relax hair with Forever Silk Crème Conditioning Relaxer to the desired straightness, using techniques for touch-up or virgin hair.
  - Rinse thoroughly, neutralize twice with Forever Silk Conditioning & Neutralizing Shampoo.
  - Rinse all traces of relaxer from hair, towel blot.
  - Simply follow instructions on label.

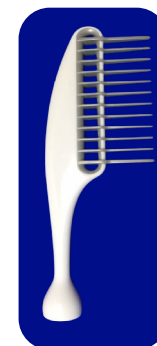
**Fine Hair 8 to 10 min.; Medium 12 to 15 min.; Coarse/Resistant 15 to 18 min.;**



2. Shampoo hair twice with **Forever Silk Conditioning & Neutralizing Shampoo**
  - Rinse hair thoroughly.
  - Hair is now ready to accept the Step 2 Penetrating Leave-In Conditioner.



3. **Apply the Step 2 Penetrating Leave-In Conditioner.**
  - Section hair. Now saturate the hair thoroughly from root to the ends.
  - Comb and rub the Step 2 into the hair.
  - First use a detangling comb.....
  - **Use fingers with Step 2, to remove tangles!!!**
  - Then with a fine toothed comb. This will insure total penetration of the conditioner into the cortex of each hair shaft. **LEAVE IN.**
  - Hair is now ready for Step 3 Leave-In Moisture Treatment



## ROLLER SET STYLING



**4. Apply the Step 3 Leave-In Moisture Treatment** to each section as you did with Step 2.

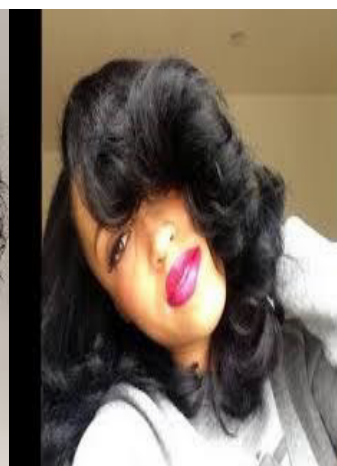
- Saturate the hair thoroughly from the roots to ends.
- Comb and rub the hair first with a detangling comb, if needed, then with as fine a toothed comb as permissible.
- (This insures total penetration of the Moisture Treatment into the hair shaft, closes the cuticle and seals in the moisture created by STEP 2.)

**REMEMBER, STEP 3 IS ALWAYS LEFT IN, NEVER RINSED OUT**



**5. Comb through an appropriate amount of Step 4 Crème Moisture Stimulant** to protect the hair while styling. Hair is now ready for ROLLER SETTING.

- Perform the ROLLER SETTING technique of your choice. You may apply more Step 3 Leave-In Moisture Treatment IF needed *to allow comb to glide through the hair* as you set hair on rollers.
- Additionally, you may use **Setting Lotion** on soft, fine hair textures, if needed.
- Allow hair to air dry or use a hooded dryer to speed drying time .



Call or Click Today!

888-351-SILK OR [www.forever-silk.com](http://www.forever-silk.com)

## STOP RIPPING IT OUT !!!



**1a.** Shampoo hair with Step 1 Cuticle Cleansing Shampoo

**1b.** Rinse thoroughly. Hair is now ready to accept the Step2 Penetrating Leave-In Conditioner.



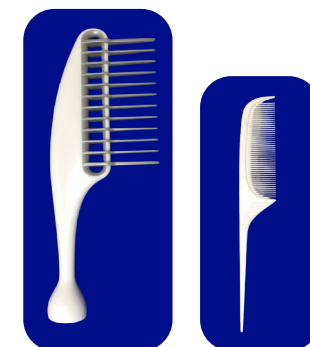
**2. Apply the Step 2 Penetrating Leave-In Conditioner.**

- Section hair using small manageable partings
- Now saturate the hair thoroughly from root to the ends to stop breakage during combing.. The more product you use at this point, the less hair will be in the comb.
- Before using a comb, **use fingers with Step 2, to remove tangles!!!**
- Now use a detangling comb to detangle hair further.
- Next, comb and rub the Step 2 into the hair with a finer toothed comb from root to ends.
- This insures total penetration of the conditioner into the cortex of each hair shaft.
- **LEAVE IN.**
- **If TANGLES ARE STILL PRESENT, P L E A S E S T O P !!!**  
Hair is now ready for Step 3 Leave-In Moisture Treatment.



**3. Apply the Step 3 Leave-In Moisture Treatment GENEROUSLY**, first to the hair lines area of the patron.

- Using partings, saturate the hair thoroughly from the roots to ends.
- **Use fingers to get the remaining tangles from hair partings!!!**
- Comb and rub the hair first, with a DETANGLING COMB, then with as fine a toothed comb as permissible from root to ends. This insures total penetration of the Step 3 Moisture Treatment into the hair shaft and seals in the moisture created by STEP 2.



**THE FOREVER SILK CONDITIONING SYSTEM DETANGLES AND SILKENS**



## STOP BURNING IT UP!!!

**4. Apply a small amount of Step 4 Crème Moisture Stimulant to each section as needed.**

- If your natural curl pattern is desired as your style, simply allow hair to air dry.
- Blow dry or use a hooded dryer to reduce drying time.
- If a slightly straighter style is desired, use a blow dryer with comb or brush to get desired straightness.
- For light, silky straight and smooth styles, use a Flat Iron with as much heat as practical for your hair .type. Any vapor is excess moisture.

**Forever Silk Step 4 Crème Moisture Stimulant PROTECTS hair from heated implements.**

**Call or Click Today!**






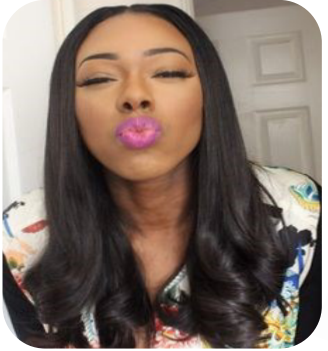




**888-351-SILK OR [www.forever-silk.com](http://www.forever-silk.com)**



**The Forever Silk Conditioning System** is the perfect choice for Bi-Racial hair textures. Using the System saves time with its de-tangling features, and is convenient to use. Bi-Racial hair textures vary from Loose Curly to Soft Wavy, even Kinky Coily. You may use the Forever Silk Conditioning System to condition and/or style these hair textures in various ways. If you choose, your hair may be conditioned, and worn in its natural state. If you prefer, you may blow it dry or flat iron it to a silky straight look to achieve different style variations, **all chemical free**. You determine the style you want to wear for different occasions.

Visit our website, [www.forever-silk.com](http://www.forever-silk.com), click on **instructional videos** for an online

**STOP RIPPING IT OUT !!! GET FOREVER SILK**

Thermal Protectant & Daily Moisturizer	Hair Texture & Type	Styles & Looks
 	<b>STRAIGHT/ &amp; FINE TO MEDIUM</b>  Spray light mist; Comb thru for even distribution; Watch absorption, do not over apply Complete Style & Look	
 	<b>WAVY &amp; MEDIUM TO COARSE</b>  Apply evenly with fingers; Comb thru for even distribution; Watch absorption, do not over apply Complete Style & Look	 
 	<b>COARSE to KINKY COILY</b>  Apply evenly with fingers; Comb thru for even distribution; Watch absorption, do not over apply; Complete style and look;	

Choose the Forever Silk Hair & Skin Systems **protective moisturizer** based upon your hair texture. Select styling tool based upon your desired hair style, ie.. AIR DRY, BLOW DRY, FLAT IRON, HOT COMB, CURLING IRON.

STOP BURNING IT UP!!! GET FOREVER SILK

Call or Click Today!

888-351-SILK OR [www.forever-silk.com](http://www.forever-silk.com)



# CONDITIONING & STYLING SILVER GRAY HAIR

**USE FOREVER SILK'S BRIGHT SILVER TO GET SILVER GRAY HAIR WITH SHEEN, SILKINESS, AND BODY, DURING...The Forever Silk Crème Conditioning Relaxer Application. With Cold Crème and Shea butter. (FOR PROFESSIONAL USE ONLY!)**



**1. Relax Hair with Forever Silk Crème Conditioning Relaxer to the desired straightness, using techniques for touch-up or virgin hair.**

- **Rinse thoroughly, neutralize twice with Forever Silk Conditioning & Neutralizing Shampoo.**
- **Rinse all traces of relaxer from hair towel blot.**
- **Simply follow instructions on label.**



**2. Neutralize Hair**

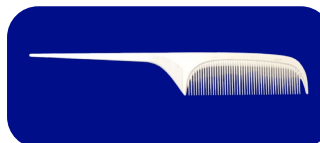
- Shampoo hair twice with **Forever Silk Conditioning & Neutralizing Shampoo.**
- Rinse hair thoroughly.
- Hair is now ready to accept Forever Silk Bright Silver Conditioner & Brightener.







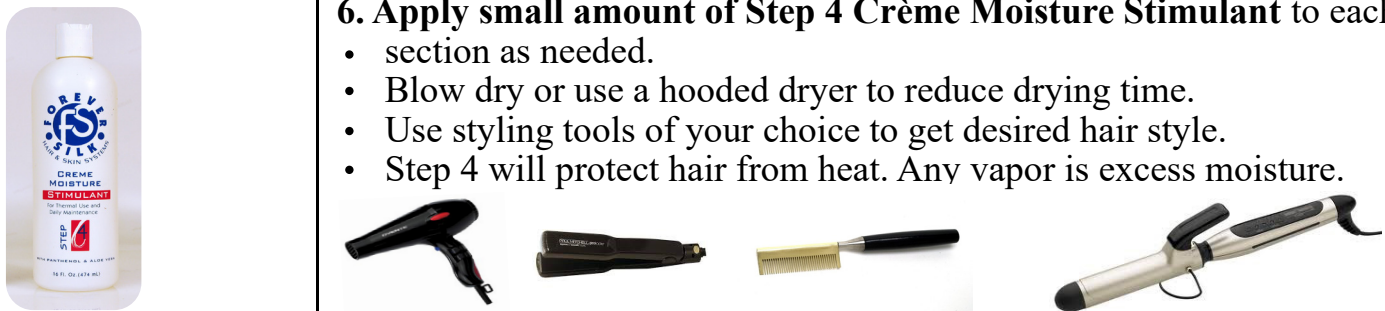

**\*\*\*Forever Silk Bright Silver** is formulated with extra conditioners to **DEEP CONDITION** your hair while restoring its natural silver grey luster. Bright Silver will not leave bluish undertones as some products can. For best results use with Forever Silk Conditioning Relaxer and Forever Silk Neutralizing & Conditioning Shampoo. No mixing required. Safe to use after relaxers. Use Bright Silver after relaxing and rinsing neutralizing shampoo from hair. **Bright Silver can be used to remove discoloration from natural hair as well.** Follow directions for use >

**3. Apply Forever Silk Bright Silver**

- Shake well.
- Spray hair if there is discoloration or yellowing while hair is damp at shampoo bowl.
- Saturate thoroughly with Bright Silver.
- Comb Forever Silk Bright Silver through hair with fine toothed comb from roots to ends **until level of desired brightness is achieved** usually 10 to 20 minutes for most hair types.
- **Allow more time for thicker coarser hair textures.**
- **Rinse completely with warm water.**
- Towel blot
- Hair is now ready for Step 2



# CONDITIONING & STYLING SILVER GRAY HAIR (cont.)

PRODUCTS	INSTRUCTIONS FOR USE	HAIR STYLES AND LOOKS
	<p><b>4. Apply the Step 2 Penetrating Leave-In DEEP Conditioner</b></p> <ul style="list-style-type: none"><li>• Now saturate the hair thoroughly from root to the ends.</li><li>• <b><u>Use fingers with Step 2, to remove tangles!!!</u></b></li><li>• Comb and rub the Step 2 into the hair.</li><li>• Use a <b>detangling comb</b> if needed, then a fine toothed comb.</li><li>• This insures total penetration of conditioner into <b>CORTEX</b>.</li><li>• <b>LEAVE IN!!! DO NOT RINSE OUT!!!</b></li><li>• Hair is now ready for Step 3 Leave-In Moisture Treatment.</li></ul>	
	<p><b>5. Apply the Step 3 Leave-In Moisture Treatment</b> first to each section as you did with Step 2.</p> <ul style="list-style-type: none"><li>• Saturate the hair thoroughly from the roots to ends.</li><li>• Comb and rub the hair first with a <b>detangling comb</b>, if needed, then with as fine a toothed comb as permissible.</li><li>• This insures total penetration of the Moisture Treatment into the hair shaft, closes the cuticle and seals in the moisture created by STEP 2.</li><li>• <b>REMEMBER, STEP 3 IS ALWAYS LEFT IN, NEVER RINSED OUT.</b></li></ul>	
	<p><b>6. Apply small amount of Step 4 Crème Moisture Stimulant</b> to each section as needed.</p> <ul style="list-style-type: none"><li>• Blow dry or use a hooded dryer to reduce drying time.</li><li>• Use styling tools of your choice to get desired hair style.</li><li>• Step 4 will protect hair from heat. Any vapor is excess moisture.</li></ul>	

Call or Click Today!









888-351-SILK OR [www.forever-silk.com](http://www.forever-silk.com)



# CONDITIONING DURING COLOR APPLICATION

## SILK YOUR HAIR COLOR & LOCK IN INTENSITY, USING THE FOREVER SILK CONDITIONING SYSTEM

Perform Hair & Scalp Analysis; Look for Scalp Abrasions; Base Hair Line to Protect Against Discoloration of Skin and Scalp Irritation;

COLOR TYPE	SHAMPOO	STEP 2 LEAVE-IN	STEP 3 MOISTURE TREATMENT
<b>TEMPORARY SEMI-PERMANENT DEMI-PERMANENT</b>  <p>1. Perform Coloring Procedure According to the Color Manufacturers instructions; NEXT.....</p>	 <p>2. Shampoo hair with Forever Silk Conditioning and Neutralizing Shampoo twice2X NEXT...</p>	 <p>3. Comb through Forever Silk Step 2 (Penetrating Leave-In Conditioner) . NEXT...</p>	 <p>4. Apply Forever Silk Step 3 Leave-In Moisture Treatment liberally. This helps to seal the color and moisture created by Step 2 Leave-In Conditioner in the hair. Stroke the hair in a downwards direction from root to ends with fingertips, to help seal the hair shaft.</p>
<b>PERMANANT</b>  <p>1. Use color of your choice according to manufacturer's instructions. Upon completion of coloring technique...</p> 	 <p>2. Lightly shampoo with Forever Silk Step 1 Cuticle Cleansing Shampoo. Leave "suds cap" for 3 to 5 minutes. Rinse well.</p>	 <p>3. Comb through Forever Silk Step 2 (Penetrating Leave-In Conditioner) . NEXT...</p>	 <p>4. Apply Forever Silk Step 3 Leave-In Moisture Treatment liberally. This helps to seal in the color and moisture created by Step 2 Leave-In Conditioner . Stroke the hair in a downwards direction from root to ends with fingertips, to help seal color in the hair shaft.</p>



Call or Click Today!

888-351-SILK OR [www.forever-silk.com](http://www.forever-silk.com)



# CONDITIONING ROUND & OVAL CELLED HAIR

Use this procedure to get Light, Silky Shiny hair.



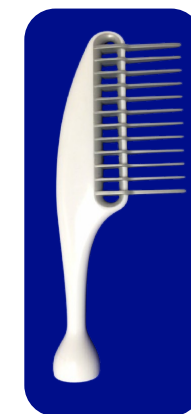
**1a.** Shampoo hair with Step 1 Cuticle Cleansing Shampoo twice, 2X.

**1b.** Rinse thoroughly. Hair is now ready to accept the Step2 Penetrating Leave-In Conditioner.



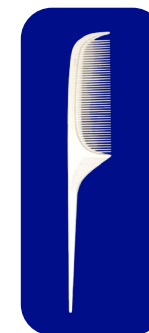
## 2. Apply the Step 2 Penetrating Leave-In Conditioner.

- Section hair using smaller manageable partings.
- Now saturate the hair thoroughly from root to the ends.
- Before using a comb, **use fingers with Step 2, to remove tangles!!!**
- Now use a detangling comb to detangle hair further.
- Next, comb and rub the Step 2 into the hair with a finer toothed comb from root to ends.
- This will insure total penetration of the conditioner into the cortex of each hair shaft.
- **LEAVE IN for color treated hair. Rinse lightly for well conditioned hair.**  
Hair will be light and silky after light rinse.
- **If tangles are still present, STOP!!!**  
Hair is now ready for Step 3 Leave-In Moisture Treatment.



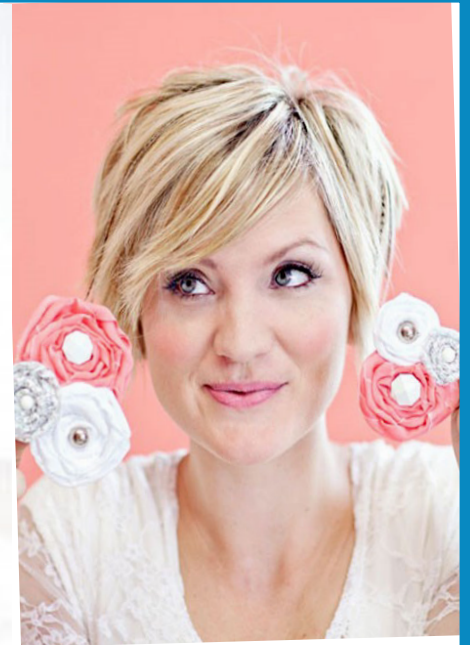
## 3. Apply the Step 3 Leave-In Moisture Treatment GENEROUSLY, first to the hair lines area of the patron.

- Using partings, saturate the hair thoroughly from the roots to ends.
- **Use fingers to get the remaining tangles from hair partings if necessary.**
- Comb and rub the hair with as fine a toothed comb as permissible from root to ends. This insures total penetration of the moisture treatment into the hair shaft and seals in the moisture of STEP 2 and/or the color.
- **REMEMBER, STEP 3 IS ALWAYS LEFT IN NEVER RINSED OUT.**



THE FOREVER SILK CONDITIONING SYSTEM DETANGLES AND SILKENS

## CONDITIONING ROUND &amp; OVAL CELLED HAIR



Call or Click Today!

888-351-SILK OR [www.forever-silk.com](http://www.forever-silk.com)

## DEEP CONDITIONING AND PROTECTION OF NATURAL HAIR BEFORE WEAVING

USE THE **FOREVER SILK HAIR & SCALP CONDITIONING SYSTEMS** ON NATURAL HAIR TO DEEP CONDITION AND PROTECT IT FROM POSSIBLE DAMAGE WHICH CAN BE DONE DURING WEAVING PROCEDURE. YOUR HAIR STAYS SOFT AND CONTINUES TO GROW UNDER YOUR WEAVED STYLE.



**1a. Shampoo hair with Step 1 Cuticle Cleansing Shampoo twice, 2X.**

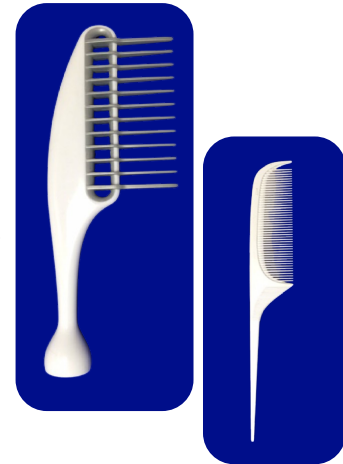
**1b. Rinse thoroughly.** Hair is now ready to accept the Step2 Penetrating Leave-In Conditioner.



### 2. Apply the Step 2 Penetrating Leave-In Conditioner.

- Section hair using smaller manageable partings.
- Now saturate the hair thoroughly from root to the ends.
- Before using a comb, **use fingers with Step 2, to remove tangles!!!**
- Now use a detangling comb to detangle hair further.
- Next, comb and rub the Step 2 into the hair with a finer toothed comb from root to ends.
- This will insure total penetration of the conditioner into the cortex of each hair shaft.
- **LEAVE IN for color treated hair.**
- **Hair will be light and silky.**
- **If tangles are still present, STOP!!!**

**Hair is now ready for Step 3 Leave In Moisture Treatment.**



### 3. Apply the Step 3 Leave-In Moisture Treatment GENEROUSLY, first to the hair lines area of the patron.

- Using partings, saturate the hair thoroughly from the roots to ends.
- **Use fingers to get the remaining tangles from hair partings if necessary.**
- Comb hair with fine toothed follow with fingers. Use as fine a toothed comb as permissible from root to ends. This insures total penetration of the moisture treatment into the hair shaft and seals in the moisture of STEP 2 and/or the color.
- **REMEMBER, STEP 3 IS ALWAYS LEFT IN NEVER RINSED OUT.**





## DEEP CONDITIONING AND PROTECTION OF NATURAL HAIR BEFORE WEAVING (cont.)

IF **PURCHASED HAIR** NEEDS TO BE CLEANED AND HAVE LIFE INFUSED INTO IT, FOLLOW THE SAME INSTRUCTIONS THAT WERE USED FOR YOUR NATURAL HAIR. USE STEPS 1, 2, & 3....THEN CHOOSE YOUR WEAVING MEDIUM.

WEAVING MEDIUM TO BE USED: 1. **CLIPS** FOR CLIP-ONS; 2. **THREAD** FOR SEW-INS; 3. **GLUE** FOR QUICK WEAVES; 4. **HEAT** FOR THERMAL BONDING OR FUSION; 5. **HAIR** FOR EXTENSIONS; 6. **HAIR** FOR STRAND BY STRAND INTEGRATION; 7. **NEEDLE** FOR LACE FRONTS

### THERMAL PROTECTANT



### HAIR TEXTURE AND TYPE

#### STRAIGHT & FINE TO MEDIUM

Spray light mist;  
Comb thru for even distribution;  
Watch absorption, do not over apply  
Complete Style & Look

#### WAVY & MEDIUM TO COARSE

Apply evenly with fingers;  
Comb thru for even distribution;  
Watch absorption, do not over apply  
Complete Style & Look

#### COARSE to KINKY COILY

Apply evenly with fingers;  
Comb thru for even distribution;  
Watch absorption, do not over apply;  
Complete style and look;  
Any vapor is excess moisture.

### FINISHED LOOKS



## CURLY PERMS" AND "JHERI CURLS"

FOLLOW MANUFACTURER'S DIRECTIONS USING THE CURLY PERM OR "THIO CURL OF YOUR CHOICE



**1.** Shampoo hair to remove any oils and / or debris from hair. Towel blot.



**6.** Apply Neutralizer solution to each curling tool or rod according to the manufacturers directions. This locks the shape of the curl on the curling tool or rod and nearly brings the hair back to its normal pH.

**3.** Apply Curl Re-arranger or equivalent to hair and straighten according to manufacturer's directions. **FOR "THIO CURLS" ONLY!**



**4.** Section hair appropriately and place hair on curling tools or rods according to the desired style. Time procedure then rinse.



**7.** Rinse thoroughly for a minimum of 5 minutes.



**5.** For "**THIO CURLS**", apply Booster. For "**CURLY PERMS**" apply Cold Wave solution to hair while on curling tools or rods according to the manufacturer's directions. This step determines the shape of the curls.



**8.** Lightly shampoo hair while removing rods or curling tools. This insures total removal of neutralizer from hair and brings hair back to its pH. Rinse and Towel Blot.



**9. SATURATE EACH CURL WITH FOREVER SILK STEP 2. PENETRATING LEAVE-IN CONDITIONER.** USE A LARGE TOOTHED COMB TO EVENLY DISTRIBUTE PRODUCT THROUGH HAIR. SCRUNCH PRODUCT INTO HAIR TO INSURE CONDITIONER FILLS THE CORTEXIAL FIBERS OF HAIR. THIS STEP HELPS TO PREVENT DRYNESS.



**10. APPLY FOREVER SILK STEP 3 LEAVE-IN MOISTURE TREATMENT.** SATURATE EACH CURL LIBERALLY. USE AS FINE A TOOTHED COMB AS PRACTICAL WHILE SCRUNCHING. THIS STEP SEALS THE CUTICLE AND LOCKS STEP 2 INTO THE CORTEX OF HAIR. THIS HELPS PREVENT THE DRYNESS, SHEDDING AND BREAKAGE TYPICALLY ASSOCIATED WITH THIOGLYCOLATE PRODUCTS.

USE THE FOREVER SILK CONDITIONING SYSTEM TO MINIMIZE DRYNESS **AFTER** USING THIOGLYCOLATE CURLY PERMS OR SO-CALLED "JHERI CURLS" eliminate damage, shedding and breakage.



# MAINTENANCE SELECTION GUIDE FOR “CURLY PERMS” AND “JHERI CURLS”

PRODUCT CHOICES	HAIR TEXTURE & TYPE	STYLES & LOOKS
 <p><b>Silk &amp; Honey Mist</b>— this weightless mist penetrates hair shaft, produces volume as it enhances styles with flexible hold. Works on all textures. Leaves no sticky residue. A combination of essential oils, vitamins and nutrients nourishes hair, enhances style. NO DRYNESS, NO FRIZZ. For Fine to Medium Hair Textures. Daily moisturizer for Coarse to Kinky Coily textures. <b>Looks like Milk, Smells like Honey</b></p>	<p><b>STRAIGHT/ &amp; FINE TO MEDIUM</b></p> <ul style="list-style-type: none"> <li>• Shake well</li> <li>• Spray light mist;</li> <li>• Scrunch in for even distribution;</li> <li>• Watch absorption, do not over apply</li> <li>• Complete Style &amp; Look</li> </ul>	 
 <p><b>Softening Lotion</b>— This unique formula provides body and shine as it revitalizes hair to look its best. This light lotion penetrates easily. Explore maximum styling options For Medium to Coarse Hair Textures.</p>  <p>Add Silk &amp; Honey Mist Daily for Medium to Kinky Coily textures.</p>	<p><b>WAVY &amp; MEDIUM TO COARSE</b></p> <ul style="list-style-type: none"> <li>• Shake well</li> <li>• Apply evenly with fingers;</li> <li>• Scrunch in for even distribution;</li> <li>• Watch absorption, do not over apply</li> <li>• Complete Style &amp; Look</li> </ul>	 
 <p><b>Step 4 Crème Moisture Stimulant</b>— Moisturizes and softens even Kinky Coily hair on contact. This moisture stimulant gives hair fullness and body – No dryness, no frizz, Non- Greasy . Hair can be styled and restyled. For Coarse to Kinky Coily Hair Textures.</p>	<p><b>COARSE to KINKY COILY</b></p> <ul style="list-style-type: none"> <li>• Shake well</li> <li>• Apply evenly with fingers;</li> <li>• Scrunch in for even distribution;</li> <li>• Watch absorption, do not over apply;</li> <li>• Complete style and look;</li> <li>• Any vapor is excess moisture;</li> </ul>	 

Call or Click Today!

888-351-SILK OR [www.forever-silk.com](http://www.forever-silk.com)



## Get the Forever Silk Scalp Conditioning System

Experience the Benefits of The Forever Silk Scalp Conditioning System for..  
For a Healthy Scalp and Beautiful Hair



<b>THE FOREVER SILK SCALP CONDITIONING SYSTEM</b>	<b>SCALP SOFTENER</b> Softens & Cultivates Scalp for rapid Growth	<b>SPOT ON FOLLICLE STIMULATOR—</b> Stimulates flow of nutrients to the hair follicle	<b>ROOT FERTILIZER &amp; GROWTH RUB</b> Accelerates growth of strong healthy hair
Loosens the Sub-Surface of Tight Scalps			
Stimulates and Nurtures Each Follicle and Hair Shaft			
Stops Dry, Flaky, Itchy Scalp. Used During the Service of Weaves, Braids, and Wigs.			
Removes Scalp Shine (Sebum); Dissolves Cradle Cap			
Repairs Damages from Weaves, Braids, and Natural Styles			
Helps fight the Side Effects of Medications			
Promotes Growth During Effects of Male Pattern Baldness			
Feeds Hair From the Roots			
Helps Restore Thinning Sides and Receding Hair Lines			
Combats Hair Loss From Chemical Damage			
Penetrates Scalp Without Build-Up			

## Healthy Hair Begins With A Healthy Scalp - Get To the Root of Your Hair Problems!

### YOU TOO CAN HAVE A HEALTHY SCALP



**Hydrates the Scalp by Creating Moisture Without Grease. Helps to Restore Thinning Sides and Receding Hair Lines.**



**Cultivates, and Softens the Scalp for Maximum Growth. Combats Dry, Flaky, Itchy Scalp.**



**Scalp Conditioners Penetrate the Scalp. Helps to Promote Strong Healthy Hair Growth. Gentle enough for all age Groups.**





## Healthy Hair Begins With A Healthy Scalp - Get To the Root of Your Hair Problems!

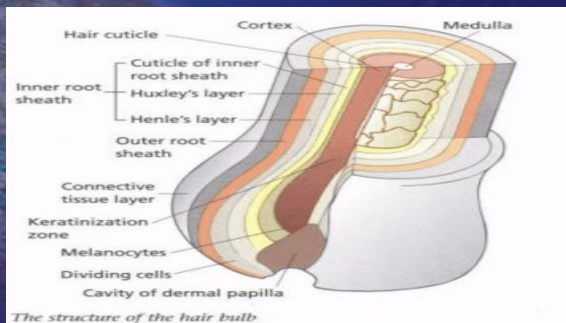


MOISTURE CREATED  
WITHIN THE HAIR SHAFT

### Forever Silk Conditioning System

•Hydrates the hair follicle to the cortex of the hair shaft.

The shape of the follicle depends upon the hair type: Flat, Round, Oval Celled, or a mixture of these.



Cross Section of the Hair Follicle

### FOREVER SILK CONDITIONING SYSTEM

•Self adjusts for ALL 3 HAIR TYPES.



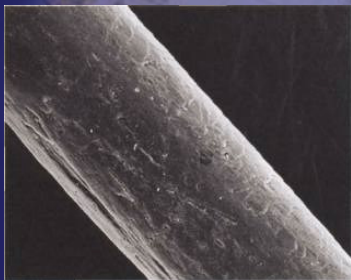
Round Celled  
Asian

Oval Celled:  
Caucasian

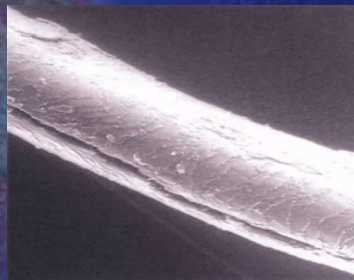
Flat Celled:  
African Descended



The Longitudinal Groove allows precious moisture to escape from the cortex. This loss of moisture causes the over-keratinization (kinkiness) of the hair shaft.



**Bi-Racial African Influenced Hair**  
Note the Partial Longitudinal Grooving running parallel to the length of the hair shaft.



**Flat Celled African Descended Hair**

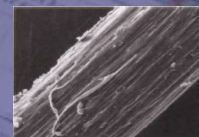
**Forever Silk Step 2 Penetrating Leave-In Conditioner** replaces sebaceous oils lost to chemical services and Longitudinal Grooving. Leaves hair soft and silky.

## FOREVER SILK DEEP CONDITIONING SYSTEM PREVENTS BREAKING OF THE HAIRSHAFT.

### The Progression of Weathering to Split Ends



**Stage 1**  
Cuticle shows erosion.



**Stage 2**  
Cuticle shows advanced erosion.



**Stage 3**  
Cuticle layer now completely eroded. The cortex is compromised.



**Stage 4**  
Cortex ruptures. Hair shaft breaks at site of weathering.

Over-porous hair is dry, and tends to develop split ends.



**Forever Silk Step 3 Leave-In Moisture Treatment** controls porosity by closing the cuticle layer of the hair shaft. This helps to prevent weathering, split ends, breakage, and leaves hair shiny and healthy.

**Call or Click Today!**

**888-351-SILK OR [www.forever-silk.com](http://www.forever-silk.com)**

## GLOSSARY

<b>AFRO-CARRIBEAN</b>	refers to hair which is genetically influenced by African heritage.
<b>Anagen</b>	Is that stage of the hair growth cycle where growth occurs. Varies genetically from 3 to 10 years before the hair sheds, <b>(Catagen)</b> , rests, <b>(Telogen)</b> , before cycling back to the Anagen stage again.
<b>BI-RACIAL HAIR</b>	refers to hair that results from a genetic blend.
<b>CHEMICALS</b>	in the context of this booklet, refers to potentially caustic substances, which alter the physical state of the hair's cortical fibers. Examples: Products which chemically color, straighten, or curl the hair. These physical changes take place in the cortex of the hair.
<b>CORTEX</b>	along with the medulla, the inner portion of the hair shaft where chemical changes occur.
<b>"CURL OR CURLY PERM"</b>	refers to <u>ammonium thioglycolate</u> . Also known as <u>permanent waves</u> it can strip out the natural oils of the hair shaft even more thoroughly than the hydroxide products. Afterward, the thioglycolate must be <u>oxidized</u> with a special solution of <u>hydrogen peroxide</u> or <u>sodium bromate</u> commonly called a neutralizer.
<b>CUTICLE</b>	the outer protective layer of the hair shaft.
<b>DEEP CONDITIONING</b>	refers to depositing nurturing and hydrating substances into the cortical fibers, which promote growth.
<b>LONGITUDINAL GROOVING</b>	Allows sebaceous oils to escape from the hair shaft. This makes Flat Celled hair dryer than Round or Oval Celled hair. Hydrogen and Oxygen, (moisture), are lost from the cortex, thereby leaving more sulfur and carbon, (the hardening agents), by content. This makes Flat Celled hair harder & more brittle.
<b>MOISTURIZE</b>	to create an environment of moisture within the hair shaft. Elasticity is improved by removing dryness.
<b>NATURAL CURL PATTERN</b>	refers to the pattern of growth experienced by each individual's hair which has not been altered chemically or thermally.
<b>NATURAL HAIR</b>	NATURAL Hair in the context of this booklet, refers to <u>not altering the physical state of the hair's cortical fibers</u> with chemical substances. Examples: Having no chemical straighteners, curlers or in some cases, colors.
<b>PENETRATION</b>	the ability of a substance to blend into the hair or skin without leaving residue. or film on it's surface.
<b>POROSITY</b>	has to do with the hair's ability to absorb substances through the cuticle, into the cortical fibers.
<b>RELAXED HAIR</b>	Relaxed hair in the context of this booklet refers to altering the state of the hair shaft by a chemical process. Hair that is straightened by chemical heat by any of the following: Sodium Hydroxide, Calcium Hydroxide, Potassium Hydroxide, Guanidine Hydroxide, or Lithium Hydroxide.
<b>WEATHERING</b>	is the gradual breaking down of the cuticle layer of the hair shaft. The cortex in turn becomes worn, and will eventually break off. PLEASE REFER TO PREVIOUS PAGE FOR AN ILLUSTRATION.

## TIPS TO, MAXIMIZE THE ANAGEN STAGE OF YOUR HAIR GROWTH CYCLE

If you decide to go natural, visit an experienced practitioner who uses the correct tools, products and procedures. Use the **Forever Silk Hair Conditioning System** between services to protect hair and promote growth.

Do not allow anyone, (including yourself), to pull your hair too tightly.

If you decide to relax or "perm" your hair VISIT A LICENSED COSMETOLOGIST who uses **Forever Silk's Crème Conditioning Relaxer**. It has Cold Crème and Shea Butter to protect hair during the relaxing service. They have been trained to perform an analysis of scalp and hair prior to chemical work. Also, you are advised not to combine chemical services, like relaxing and coloring at the same time.

If you decide to use a Do It Yourself perm, BE CAREFUL!!! with your hair. Follow manufacturers instructions.

Don't take unnecessary chances with your hair.

Go to a PROFESSIONAL COSMETOLOGIST to have your ends clipped. This will help to prevent split ends and promote growth.

Do not use rubber bands and metal clips which can damage and cut the hair shaft.

When using heat, use a thermal protector designed for your hair type and texture. Forever Silk has a great choice of products designed for hair from Fine/Thin to Kinky/Coily hair textures. Namely, **Silk & Honey Mist; Softening Lotion; and Step 4 Moisture Stimulant;**

You may now Deep Condition your hair more often when you use the **Forever Silk Hair Conditioning System**.

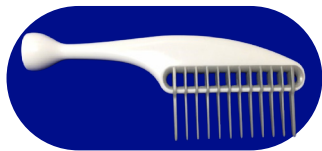
Simply comb through Steps 2, then Step 3 to condition and seal the hair shaft. Deep condition your hair with your comb!!! **LEAVE THEM IN!!!**

These are LEAVE-IN CONDITIONERS.

USE Silk or Satin scarfs when you cover your hair at night. Silk or Satin bedding is helpful also.

Try not to use products with SD 40 alcohol. These have been known for decades to dry out the hair make it brittle and cause breakage. If you decide to use an alcohol laced product, protect yourself by using the Forever Silk Hair

### USE QUALITY TOOLS



Use higher quality combs and brushes that reduce or eliminate friction.



Select tools for your heat work that will perform well over an extended length of time. Look for SMOOTH EDGES on Combs and Flat irons that will not snag or cut the hair shaft.

Call or Click Today!

888-351-SILK OR [www.forever-silk.com](http://www.forever-silk.com)



# QUICK REFERENCE GUIDE

- 3.Introducing the System
- 4.Natural Hair
- 6.Flat Iron
- 8.Press & Curl
- 10.Blow Drying
- 12.Afro-Caribbean Styling
- 15.Relaxed—Blow Dry
- 17.Relaxed—Wraps
- 19.Relaxed—Roller Sets
- 20.Bi-Racial/No Chemicals
- 24.Gray Hair Care
- 26.Coloring Techniques
- 29.Asian & Caucasian
- 30.Weaving & Conditioning
- 32.Jheri Curls /Curly Perms
- 35.Healthy Scalp Care



**The Multipurpose Deep Conditioning System Created For Your Hair**

**Call or Click Today!**

**888-351-SILK OR [www.forever-silk.com](http://www.forever-silk.com)**